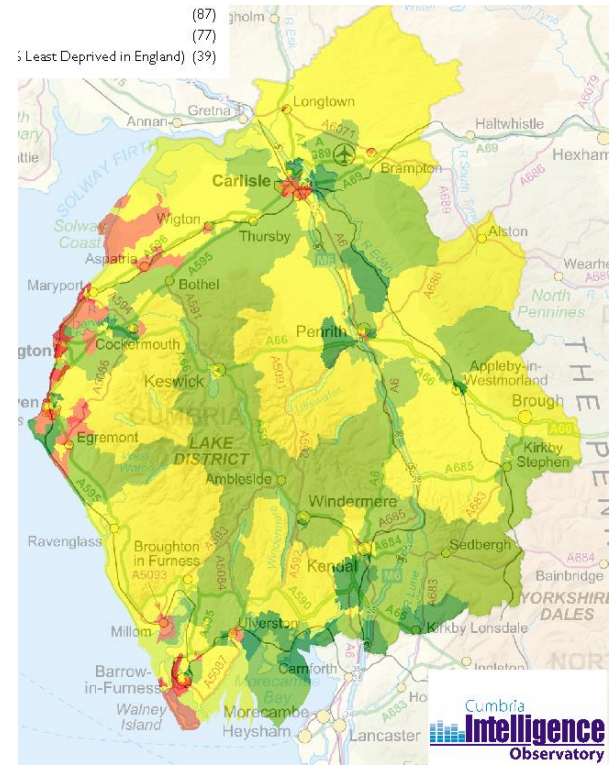




Cumbria County Council
Area Working
in
South Lakeland

The Challenges



Complex Governance

- Cumbria County Council
- 6 District Authorities
- 2 National Parks
- Over 250 Parish and Town Councils
- 6 MP's
- NHS organisations



South Lakeland



- Cumbria County Council
- South Lakeland District Council
- 2 National Parks
- 2 MPs
- 5 Integrated Care Communities
- 8 LAP areas
- 18 Electoral Divisions
- 57 Parish and Town Councils
(77 meetings in total)
- 100s of distinct communities
- 103,500 Residents

Council Priorities

Our vision is: “To be an effective and efficient organisation that delivers the best possible services for the people of Cumbria within its available resources, protects the vulnerable, and works with others in the community to shape services and help find solutions for the future.”



Children

It's a council priority



To safeguard children and support families and schools so that all children in Cumbria can grow up in a safe environment, and can fulfil their potential.

Adults

It's a council priority



To support older, disabled and vulnerable people to live independent and healthy lives.

Communities

It's a council priority



To enable communities to help shape their local services, promote health and wellbeing and support those in poverty.

Infrastructure

It's a council priority



To provide a safe and well managed highways network, secure infrastructure improvements and support local economic growth.

Efficiency

It's a council priority



To be a modern and efficient council.

SL Local Committee Priorities

Children & Young People

To safeguard children and support families and schools so that all children in South Lakeland can grow up in a safe environment and can fulfil their potential

Health & Wellbeing

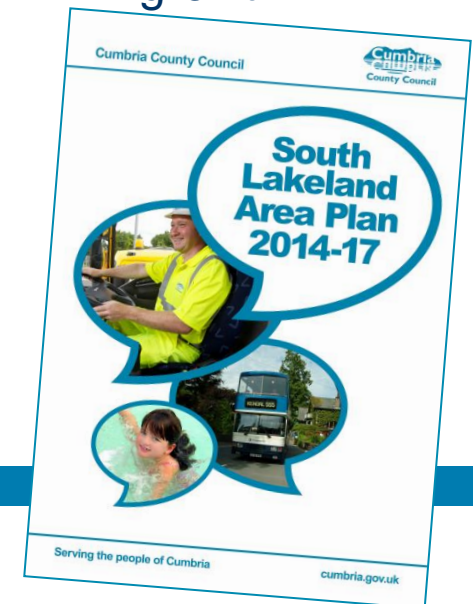
To enable communities to help shape their local services, promote health and wellbeing and support those in poverty

Highways & Transportation

To provide a safe and well managed highways network and secure infrastructure improvements

Economic Development

To support local economic growth



Area Working Approach



Area working is crucial to service redesign and delivery

Council Plan 2016-19

- Principle: Area based working and shaping services locally
- Priority: To enable communities to help shape their local services . . .

Innovative approach to service re-design

Services not buildings

Increasing personal choice and control

Better coordination and use of resources and our local assets (people, partnerships)

Responding to changing expectations (self-service/digital)

Better and more joined up community services

Working with our Town & Parish Council Partners

Town / Parish Council	Project Name
Grange	Multi-agency Flood Works
	Grange Saturday Bus Service
Aldingham	Verge Cutting Development
Lower Allithwaite	Cartmel Traffic Management Plan
	A590 Haverthwaite
	Pedestrian Safety Scheme – Lower Holker & Allithwaite
	Cartmel School Safety Scheme
Kirkby-in-Furness	Safe pedestrian crossing outside Burlington School
	Implementation of land drain in Beckside
Colton	Village sign replacement
	Drainage improvement to Finsthwaite Village Hall

Town / Parish Council	Project Name
Colton	Farm & Cattle Warning Signs
	Bouth Village Green
Satterthwaite	Portable Gritter
Coniston	Dropped Kerb at Old Furness Road
Hawkshead	The Hawkshead Delivery Group
	Economic Impact Study
Duddon	Development of Community Led Plan
Pennington	Community Led Plan
	Victoria Cross Paving Slab & Ceremony
Lower Holker	Youth Shelter on Moor Lane
Arnside	Lengthsman Scheme
	Arnside Common Footpath Scheme

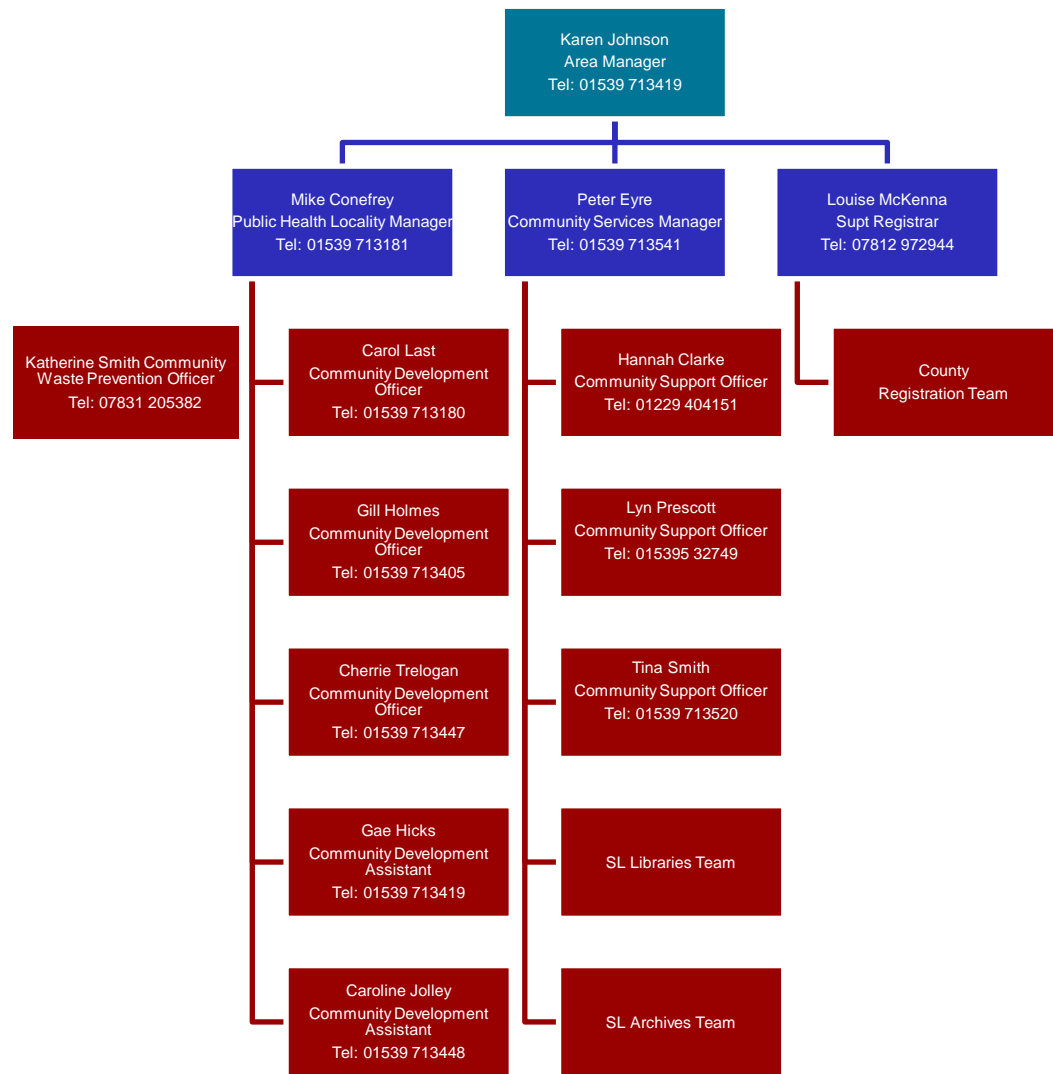
Town / Parish Council	Project Name
Heversham	Registration of Common Land
Burton	Lengthsman Scheme
	Book Drop
Holme	Book Drop
Preston Richard	Replacement of Playground Equipment
Levens	The Levens Valley Community Allotments
Underbarrow & Bradlyfield	Speed Indicator Device
Ulverston	Ulverston Healthy Town
	Replacement of Bus Shelters
	Permissive Footpath
Longsleddale Parish Meeting	Verge Cutting Development
Staveley & Ings	Signage & Vegetation Clearance (following the floods)

Town / Parish Council	Project Name
Staveley & Ings and Kentmere	Gowan Old Bridge rebuild following the floods
Skelwith & Witherslack	Public Access Defibrillator for Skelwith
Bowness & Windermere	Bowness & Windermere Forward Economic Development Project
Sedbergh	Dementia Alliance Action Group
	Sedbergh Songsters
Sedbergh & Kirkby Lonsdale	Appleby Fair community engagement & support
	Developing the communities role in the East ICC (inc all 5 areas)
Sedbergh & Dent	Brown Tourism Signs on M6
Garsdale	Tree Cutting
Kendal	Tour of Britain
Local Area Partnerships x 7	Gully Mapping
Various Parishes	Flood Forums – Information Sharing
Various Parishes	Support to Youth Groups

Future Opportunities & Next Steps

- Work with CALC & LAPs to identify local priorities
- Develop collaborative partnerships with parish councils to shape services & shared priorities
- Consider how we improve communication
- Continue to engage in development of specific projects

South Lakeland Community Services Team



Thank you

Your views and ideas